



11367 Higgins Airport Way  
 Burlington, WA 98233  
 www.nordictug.com  
 (360) 757-8847

32-2010 Thru-hull Locations

NT #

FILE LOCATION X:\Solid Edge - Cad Files\Master Boats\32-2010\Hull\32-2010 Thru-hull Locations.sft

Rev.#	Date
	2/9/2010

SEE PAGE 1 FOR COMPLETE REVISION HISTORY

**Vessel Number:**

**Mass:**  
230.612 lbm

**Issue Date: Date Printed:**  
11/9/2009 3/2/2010

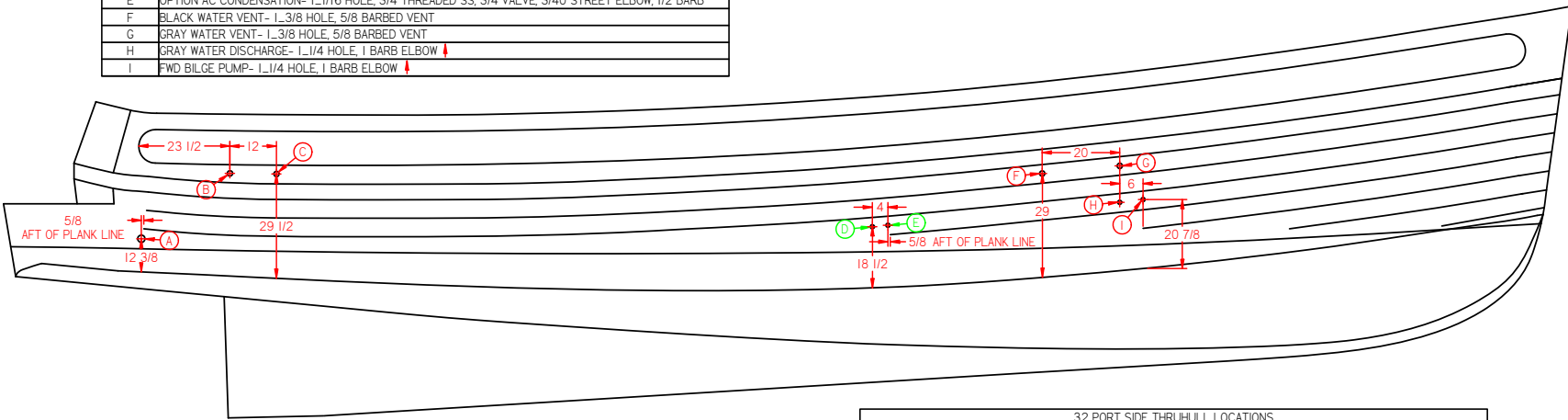
Drafted By: seth  
 Status: Available  
 Sheet: 1 of 3

11" x 17" Sheet Inches

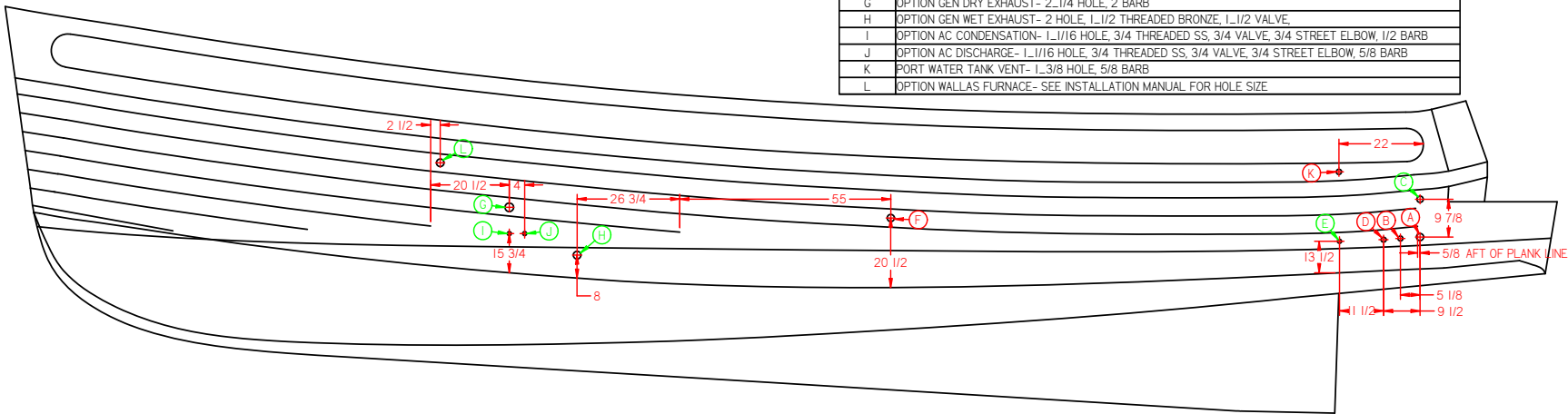
COPYRIGHT 2009 NORDIC TUGS, INC. ALL RIGHTS RESERVED. THE REPRODUCTION IN WHOLE OR IN PART OR DISTRIBUTION OF THIS DOCUMENT TO ANY PERSON OR PARTY FOR ANY PURPOSE NOT SPECIFICALLY AUTHORIZED BY NORDIC TUG INC. IS STRICTLY PROHIBITED.

**NOTES**  
 1. CENTER ALL HOLES BETWEEN PLANK LINES  
 2. VERTICAL DIMENSIONS ARE FOR REFERENCE ONLY  
 3. ALL DIMENSIONS ARE TO THE CENTER OF HOLES

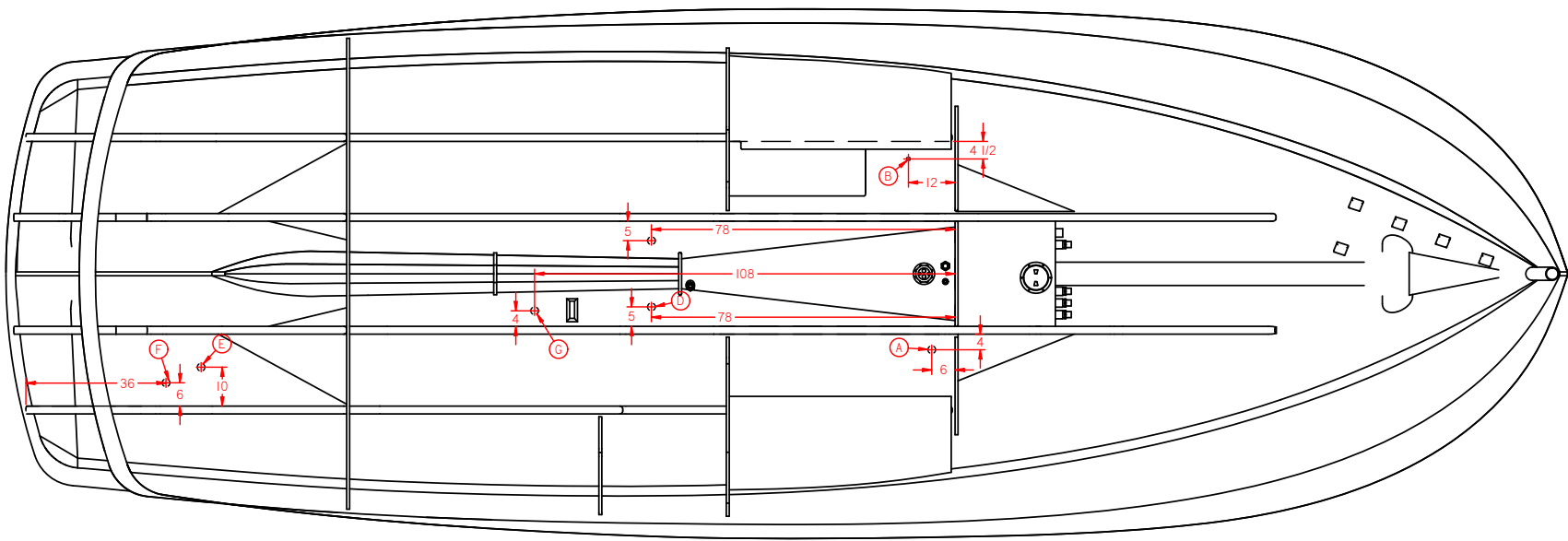
32 STBD SIDE THRUHULL LOCATIONS	
A	COCKPIT DRAIN- 1_7/8 HOLE, 1_1/2 THREADED SS, 1_1/2 VALVE, 1_1/2 BARB
B	STBD WATER TANK VENT- 1_3/8 HOLE, 5/8 BARBED VENT
C	FUEL TANK VENT- 1_3/8 HOLE, 5/8 BARBED VENT
D	OPTION AC DISCHARGE- 1_1/16 HOLE, 3/4 THREADED SS, 3/4 VALVE, 3/4 STREET ELBOW, 5/8 BARB
E	OPTION AC CONDENSATION- 1_1/16 HOLE, 3/4 THREADED SS, 3/4 VALVE, 3/4 STREET ELBOW, 1/2 BARB
F	BLACK WATER VENT- 1_3/8 HOLE, 5/8 BARBED VENT
G	GRAY WATER VENT- 1_3/8 HOLE, 5/8 BARBED VENT
H	GRAY WATER DISCHARGE- 1_1/4 HOLE, 1 BARB ELBOW ↓
I	FWD BILGE PUMP- 1_1/4 HOLE, 1 BARB ELBOW ↓



32 PORT SIDE THRUHULL LOCATIONS	
A	COCKPIT DRAIN- 1_7/8 HOLE, 1_1/2 THREADED SS, 1_1/2 VALVE, 1_1/2 BARB
B	AFT BILGE PUMP- 1_5/16 HOLE, 1 THREADED SS, 1 VALVE, 1 BARB
C	OPTION ESPAR EXHAUST- 2_1/4 HOLE
D	MID BILGE PUMP- 1_5/16 HOLE, 1 THREADED SS, 1 VALVE, 1 BARB
E	PROPANE LOCKER DRAIN- 1_1/16 HOLE
F	SINK DRAIN- 1_7/8 HOLE, 1 BARB
G	OPTION GEN DRY EXHAUST- 2_1/4 HOLE, 2 BARB
H	OPTION GEN WET EXHAUST- 2 HOLE, 1_1/2 THREADED BRONZE, 1_1/2 VALVE
I	OPTION AC CONDENSATION- 1_1/16 HOLE, 3/4 THREADED SS, 3/4 VALVE, 3/4 STREET ELBOW, 1/2 BARB
J	OPTION AC DISCHARGE- 1_1/16 HOLE, 3/4 THREADED SS, 3/4 VALVE, 3/4 STREET ELBOW, 5/8 BARB
K	PORT WATER TANK VENT- 1_3/8 HOLE, 5/8 BARB
L	OPTION WALLAS FURNACE- SEE INSTALLATION MANUAL FOR HOLE SIZE



32 BOTTOM THRUHULL LOCATIONS	
A	MAIN ENGINE PICK UP
B	OPTION GENERATOR PICK UP
C	OPTION SPEED TRANSDUCER
D	OPTION AC PICKUP
E	OPTION WASHDOWN
F	OPTION MACERATOR
G	OPTION BRONZE TRANSDUCER



11367 Higgins Airport Way  
 Burlington, WA 98233  
 www.nordictug.com  
 (360) 757-8847

32-2010 Thru-hull Locations  
 NT #

FILE LOCATION X:\Solid Edge Cad Files\Master Boats\32-2010 Hull\32-2010 Thru-hull Locations.sft

Rev.#	Date
	2/9/2010
SEE PAGE 1 FOR COMPLETE REVISION HISTORY	
<b>Vessel Number:</b>	
<b>Mass:</b> 230.612 lbm	
<b>Issue Date: Date Printed:</b> 11/9/2009 3/2/2010	
Drafted By: seth Status: Available Sheet 2 of 3	
11" x 17" Sheet	Inches

COPYRIGHT 2009 NORDIC TUGS, INC. ALL RIGHTS RESERVED. THE REPRODUCTION IN WHOLE OR IN PART OR DISTRIBUTION OF THIS DOCUMENT TO ANY PERSON OR PARTY FOR ANY PURPOSE NOT SPECIFICALLY AUTHORIZED BY NORDIC TUG INC. IS STRICTLY PROHIBITED.



11367 Higgins Airport Way  
 Burlington, WA 98223  
 www.nordictug.com  
 (360) 757-8847

32-2010 Thru-hull Locations

NT #

TRANSOM THRUHULLS

FILE LOCATION X:\Solid Edge Cad Files\Master Boats\32-2010\Hull\32-2010 Thru-hull Locations.dft

Rev.#	Date
	2/9/2010

SEE PAGE 1 FOR COMPLETE REVISION HISTORY

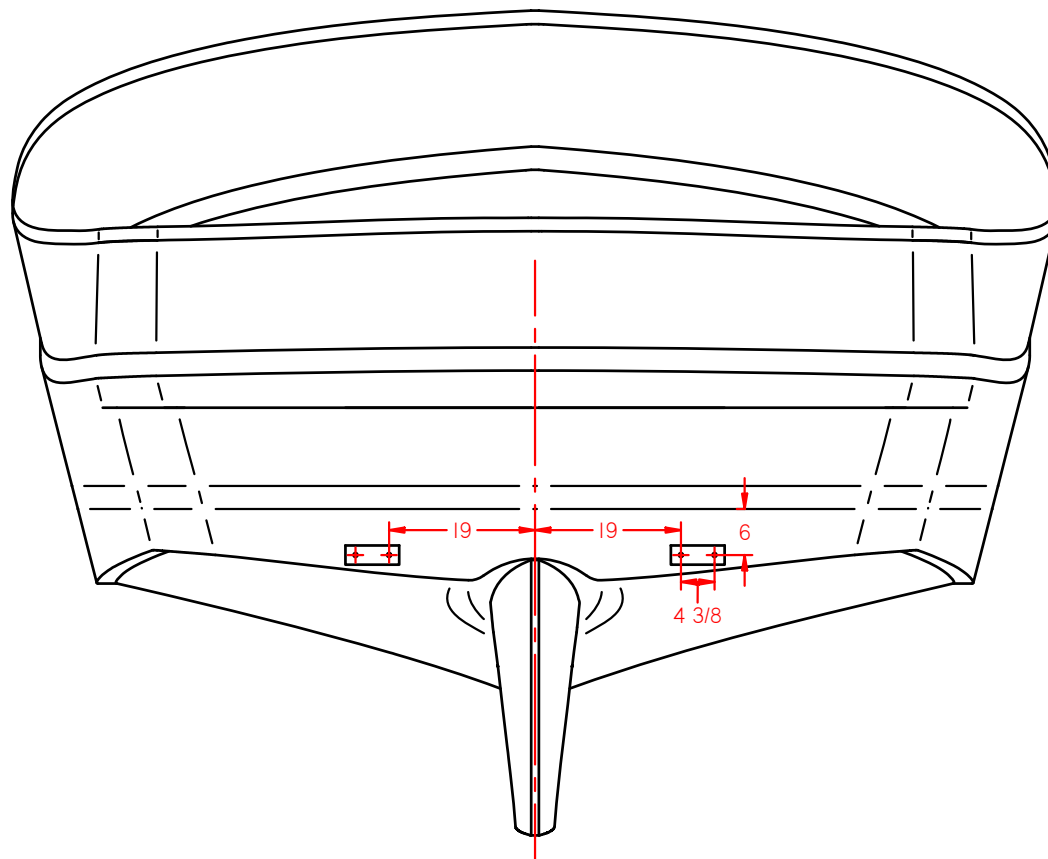
**Vessel Number:**

**Issue Date:** 11/9/2009  
**Date Printed:** 3/2/2010

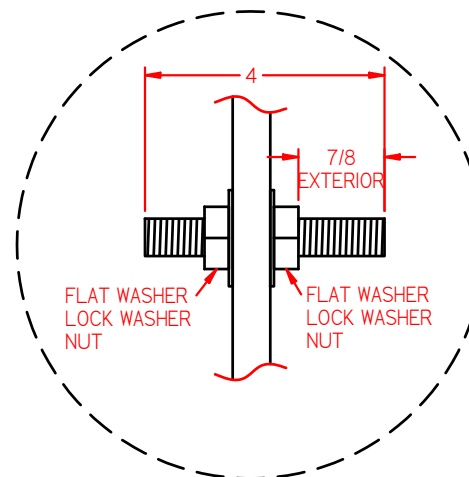
Drafted By: seth  
 Status: Available  
 Sheet: 3 of 3

8.5" x 11" Sheet Inches

COPYRIGHT 2009 NORDIC TUGS INC.  
 ALL RIGHTS RESERVED  
 REPRODUCTION IN WHOLE OR PART IS STRICTLY PROHIBITED



TRANSOM ZINC LOCATION



ZINC FASTENER DETAIL  
 1/2-20 ALL THREAD, 316 STAINLESS STEEL