



11367 Higgins Airport Way
Burlington, WA 98233
www.nordictug.com
(360) 757-8847

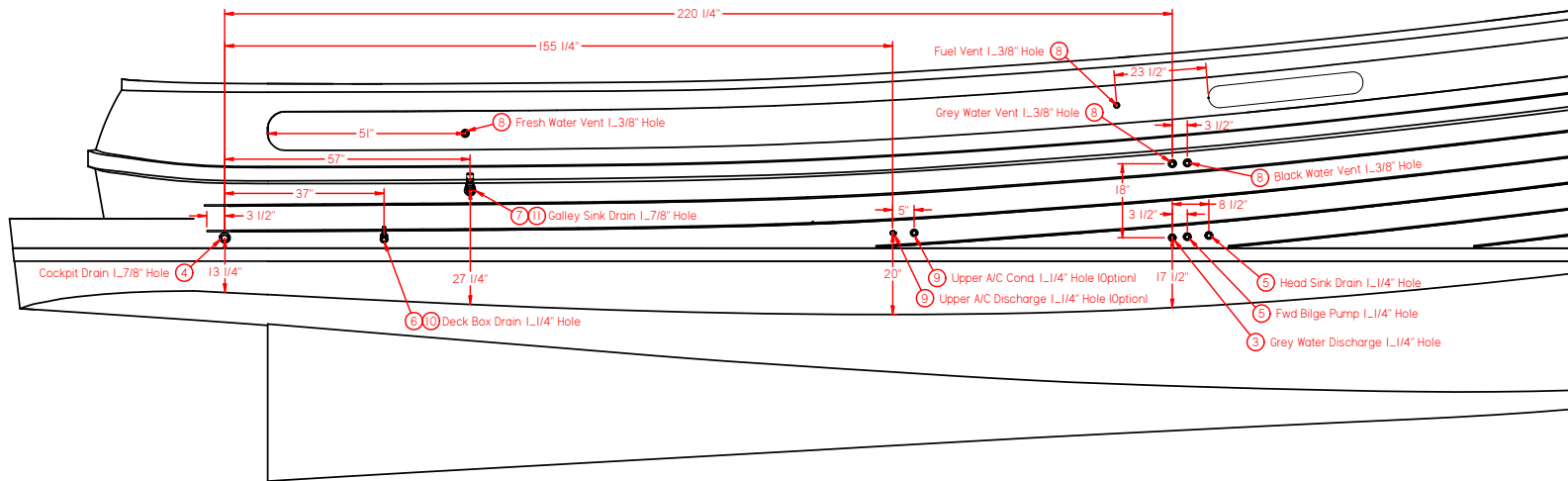
Thru Hull Locations, Profile, 37-2009.gft

Rev.#	DATE
	9/3/2009

Vessel Inv. No.
37
Material:
Material:
0.000 lbrm
Issue Date:
11/11/2008

Drafted By: seth
Status: Available

Num of Sheets: 2
Drawing No.



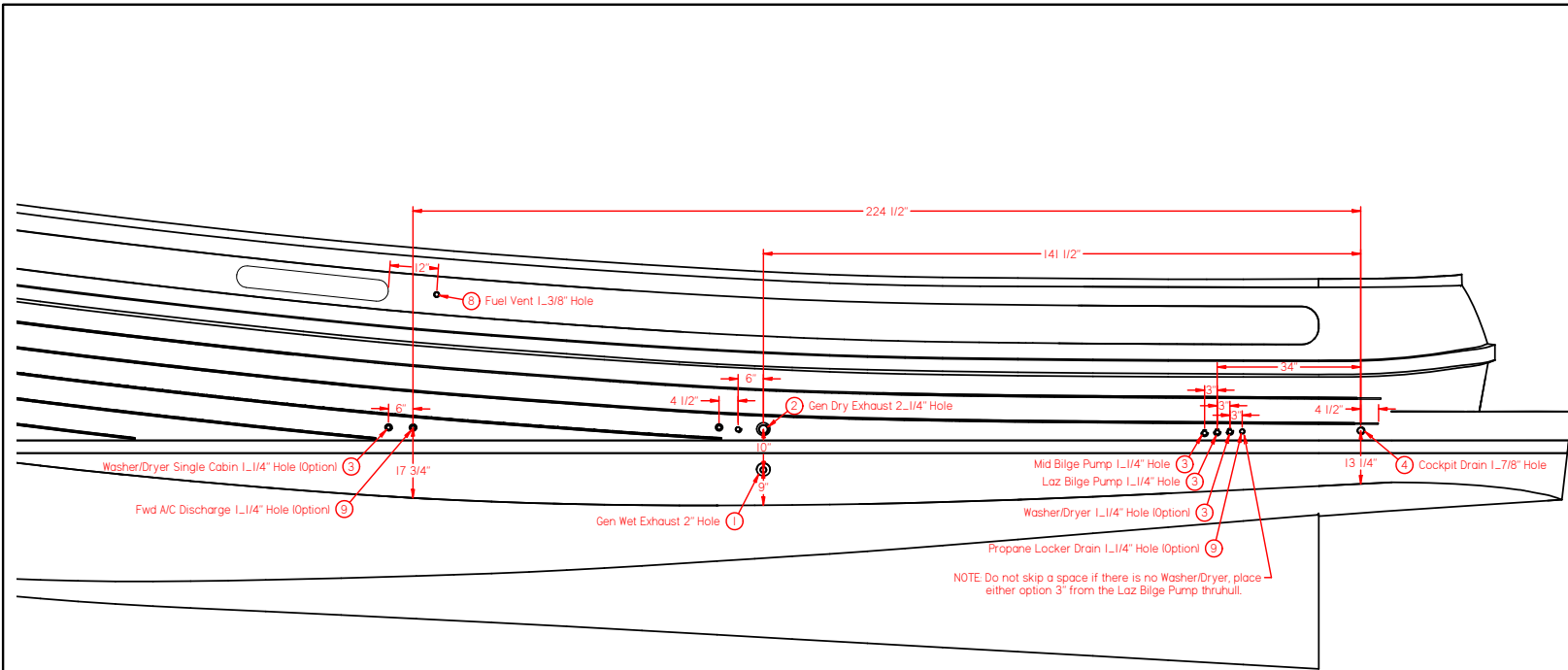
Stbd Thru Hull Locations All Models

Item Number	Document Number	Title	Quantity
1	45050	Thru-Hull, Bronze 1.50" Threaded	1
2	45340	Thru-Hull, SS 2.00" HB	1
3	45310	Thru-Hull, SS 0.75" HB	5
4	45330	Thru-Hull, SS 1.50" HB	2
5	45320	Thru-Hull, SS 1.00" HB	2
6	45350	Thru-Hull, SS 1.25" Threaded	1
7	45360	Thru-Hull, SS 1.75" Threaded	1
8	45420	Vent, SS Short Tank	5
9	45300	Thru-Hull, SS 0.625" HB	6
10	45380	Thru-Hull, SS 1.25" x 0.75" HB 90	1
11	45400	Thru-Hull, SS 1.75" x 1.5" HB 90	1

NOTE: Vertical Dimensions are for reference only, center all thru-hulls between Plank Lines.



11367 Higgins Airport Way
Burlington, WA 98233
www.nordictug.com
(360) 757-8847



NOTE: Do not skip a space if there is no Washer/Dryer, place either option 3" from the Laz Bilge Pump thru-hull.

Port Thru Hull Locations All Models

Item Number	Document Number	Title	Quantity
1	45050	Thru-Hull, Bronze 1.50" Threaded	1
2	45340	Thru-Hull, SS 2.00" HB	1
3	45310	Thru-Hull, SS 0.75" HB	5
4	45330	Thru-Hull, SS 1.50" HB	2
5	45320	Thru-Hull, SS 1.00" HB	2
6	45350	Thru-Hull, SS 1.25" Threaded	1
7	45360	Thru-Hull, SS 1.75" Threaded	1
8	45420	Vent, SS Short Tank	5
9	45300	Thru-Hull, SS 0.625" HB	6
10	45380	Thru-Hull, SS 1.25" x 0.75" HB 90	1
11	45400	Thru-Hull, SS 1.75" x 1.5" HB 90	1

NOTE: Vertical Dimensions are for reference only, center all thru-hulls between Plank Lines.

Thru Hull Locations, Profile, 37-2009.dft

Rev.#	DATE
	9/3/2009

Vessel Inv. No.
37

Material:

Material:
0.000 lbrm

Issue Date:
11/11/2008

Drafted By: seth
Status: Available

Num of Sheets: 2

Drawing No.